

50/115

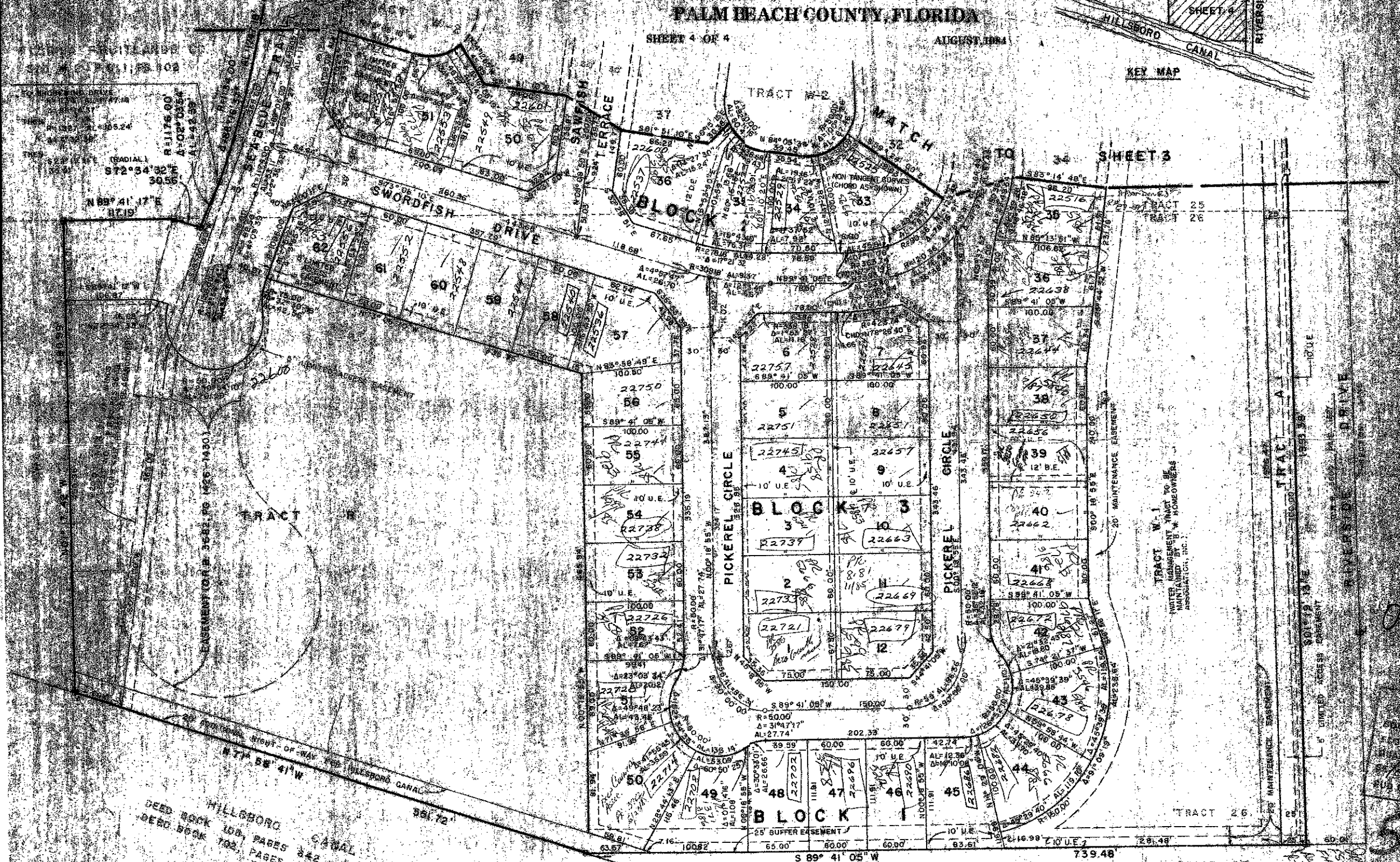
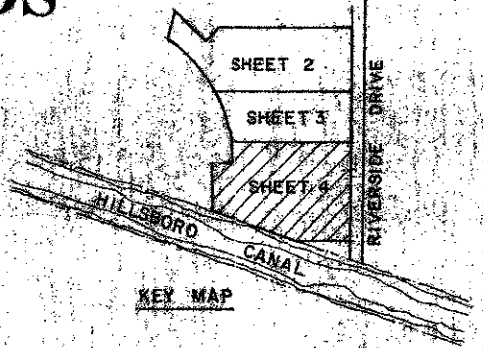
50/115

A PLANNED UNIT DEVELOPMENT PLAT NO. 3 OF BAY WINDS

BEING A SUBDIVISION OF LAND IN SECTION
27, TOWNSHIP 47 SOUTH, RANGE 41 EAST, BEING A
REPLAT OF PORTIONS OF TRACTS 4, 5, 8, 25 & 26,
FLORIDA FRUITLANDS COMPANY'S SUBDIVISION
NO. 2 (P.B. 1, PG. 102)
PALM BEACH COUNTY, FLORIDA

SHEET 4 OF 4 AUGUST, 1984

22 23
27 26



DRAWN BY T. J. BISHOP

DRAWING NUMBER

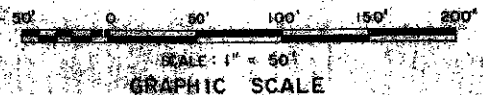
DRAWING NUMBER

HILLSBORO CANAL
DEED BOOK 100, PAGES 342-344
DEED BOOK 102, PAGES 22-23

0201-300

50/115

FLORIDA FRUITLANDS CO.
S.D. # 2 P.B. 1, PG. 102



Field Book No.	Pg.
Design	J. FRITTS
Drawn	L. BLISSOTT
Checked	E. KRIEK

ROBERT E. OWEN & ASSOCIATES, INC.
ENGINEERS - PLANNERS - SURVEYORS
WEST PALM BEACH
FLORIDA

PLAT NO. 3
OF
BAY WINDS A PUD

NOTE: ALL LOT LINES ARE RADIAL UNLESS OTHERWISE NOTED